

Physical Closures

- Internal Checkpoint (fully staffed)
- Green Line Checkpoint*
- Internal Partial Checkpoint

West Bank Barrier

- Constructed
- Under Construction
- Planned Route
- Planned Re-routing
- Barrier Gate

Closed and Restricted Areas

- Israeli military base
Access is prohibited
- Existing and projected 'closed areas behind the Barrier
Access is limited to permit holders
- Israeli firing zone and Jordan Valley Military Buffer Zone
Access is prohibited

Palestinian Communities

- Governorate Capital
- Governorate Boundary
- Built-up Community
- Israeli unilaterally declared Jerusalem municipal boundary
- Israeli Settlements
- Settlement built-up, outer limit and municipal area
- Israeli Nature Reserve

Roads

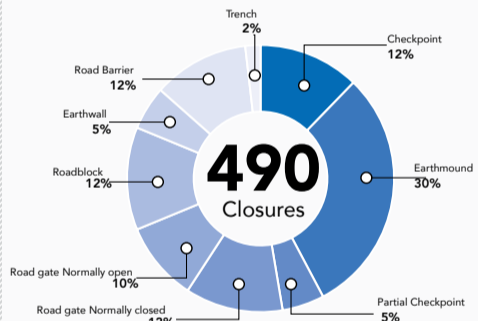
- Prohibited Palestinian vehicle use
- Main road

Oslo Interim Agreement (1994-1999)

- Area A' 1. Full Palestinian civil and security control
- Area B' 2. Full Palestinian civil control and joint Israeli-Palestinian security control
- Special Case (H2) 3. Hebron Agreement
- Intended Nature Reserve 4. Full Israeli control over security, planning and construction
- Area C'

Closure Obstacles by Governorate

Governorate	Closure Count
Jenin	16
Tubas	14
Tulkarm	25
Nablus	68
Qalqiliya	32
Salfit	34
Ramallah	101
Jericho	9
Jerusalem	59
Bethlehem	23
Hebron	109



West Bank Barrier

A complex series of concrete walls, electronic fences, and other obstacles to control Palestinian pedestrian and vehicular movement. Construction of the Barrier within the West Bank including East Jerusalem continues, contrary to the advisory opinion of the International Court of Justice.

CONCRETE BARRIER



ELECTRONIC FENCE BARRIER

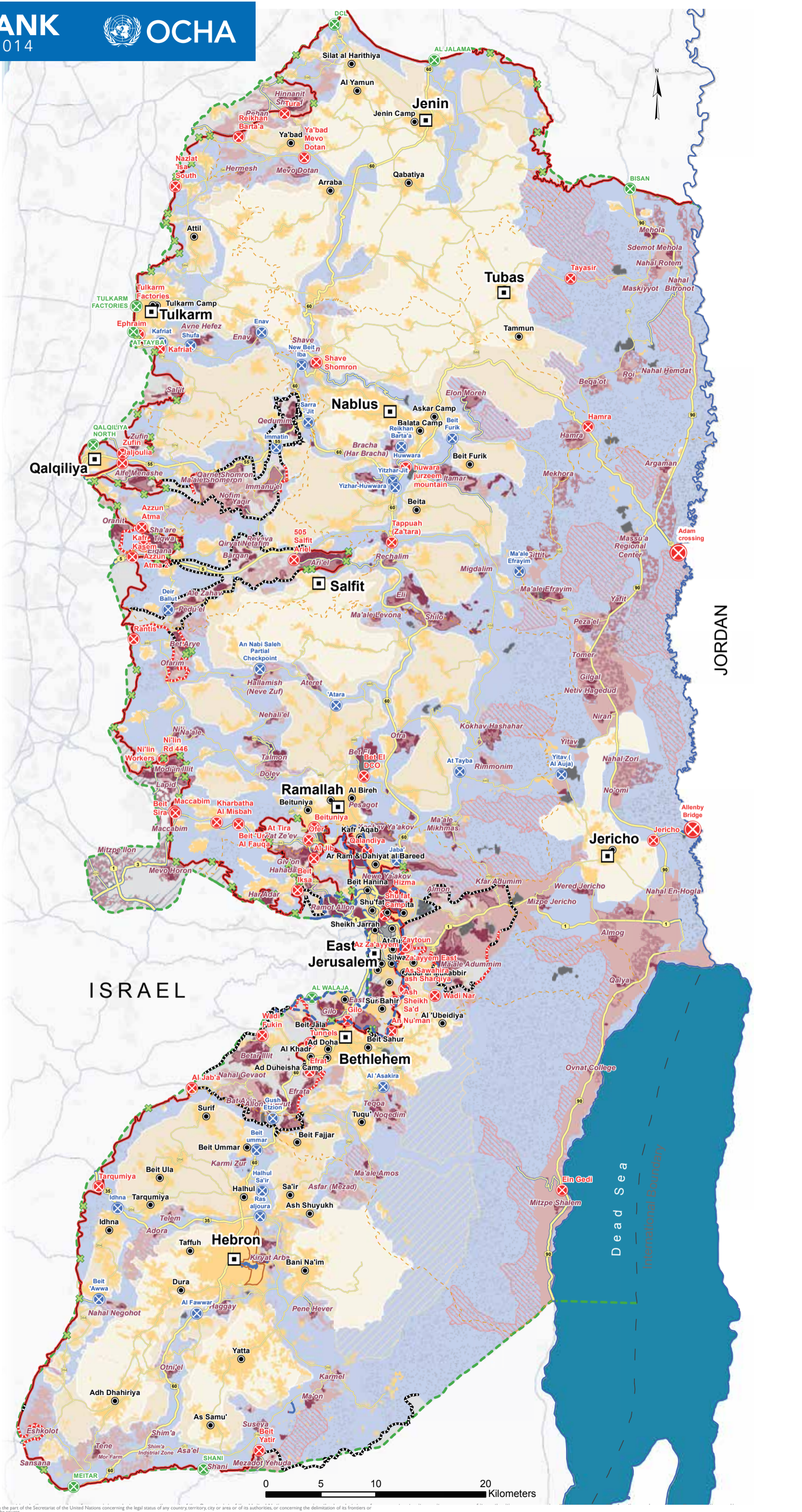


BARRIER GATE



Controls movement through the West Bank Barrier. Permits, or prior coordination, are required for Palestinians to access their lands.

Access and closure data is as of December 2014. It is collected by OCHA staff and is subject to change. Cartography: OCHA Information Management Unit. Map Produced: June 2015. Base data and statistics: OCHA, JRC, FA-MOPIC. For comments contact <om@ochaopt.org> or tel: +972 632 582-4962 www.ochaopt.org



The designations employed and the presentation of material on this map do not imply the expression of any opinion whatsoever on the part of the Secretariat of the United Nations concerning the legal status of any country, territory, city or area or of its authorities, or concerning the delimitation of its frontiers or boundaries. Reproduction and/or use of this material is only permitted with express reference to 'United Nations OCHA' as the source.